

East West Rail – Long Road Bridge

Construction Sequence

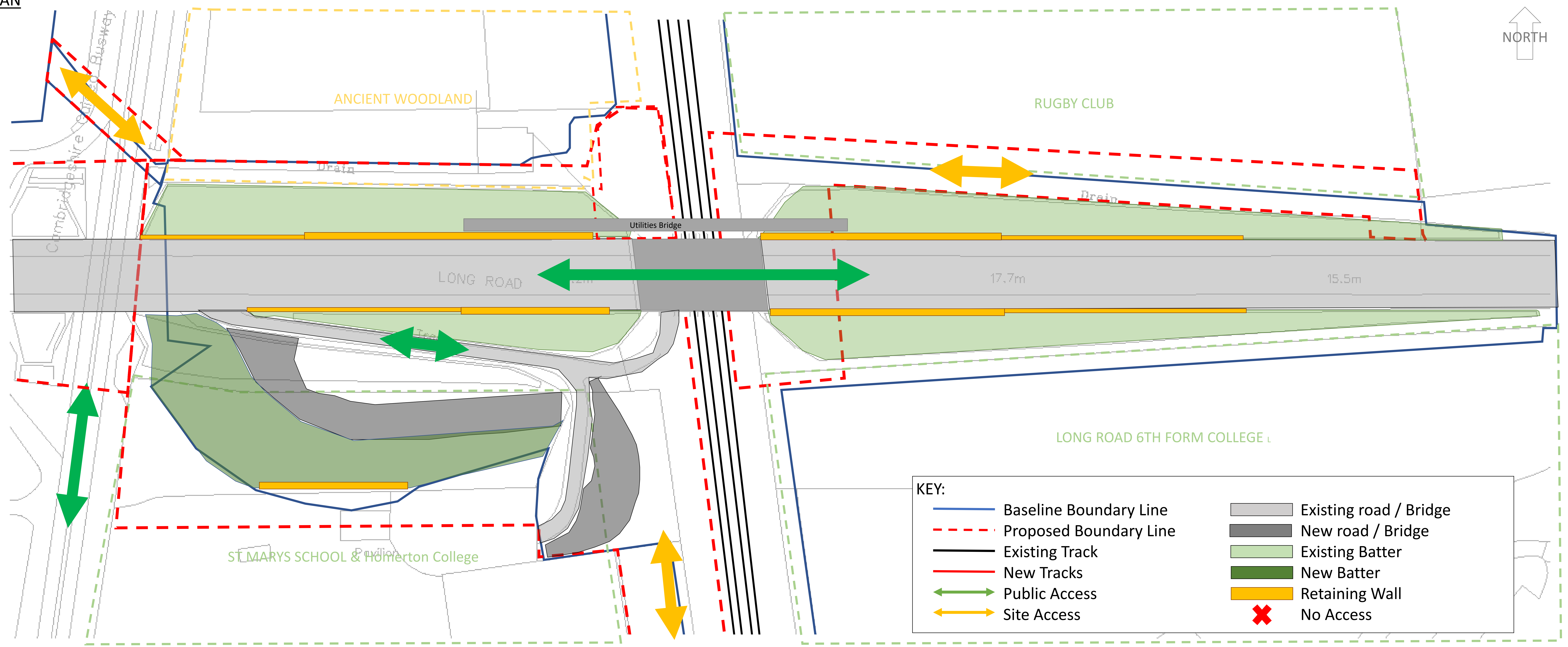
Document No: EWR_CS3-COS-CL-XX-ST-Y-000002

Revision: D00

Drawn:

Date: 18/02/2022

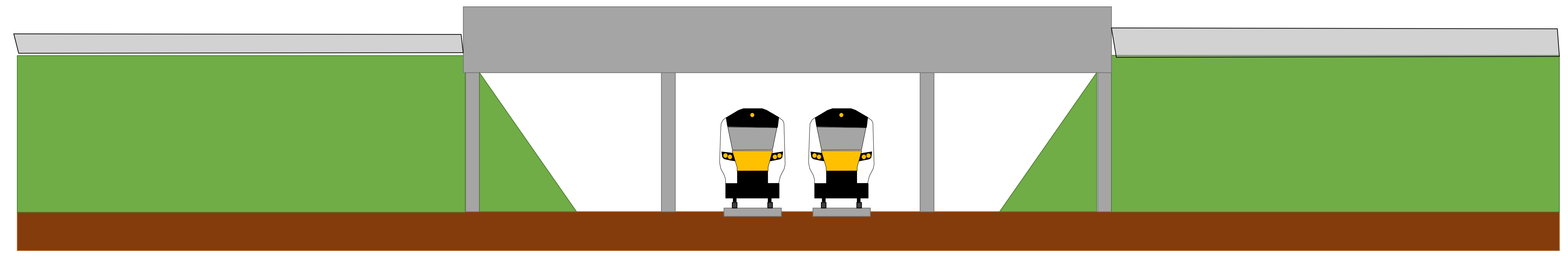
Suitability: Review



NOTES

- Enabling works prior to the bridge demolition:
1. Retaining walls installed during lane closures of Long Road.
 2. New school entrance constructed around existing entrance road maintaining access to school at all times with temporary local diversions and temporary road finishes to allow transition between road layouts.
 3. Worksites set up ready main bridge reconstruction
 4. Utilities diverted to Temporary Utility Bridge requiring various lane closures to suit utility locations.
 5. Weekend possessions expected to be required on run up to Easter possession for OLE and rail systems equipment enabling works.

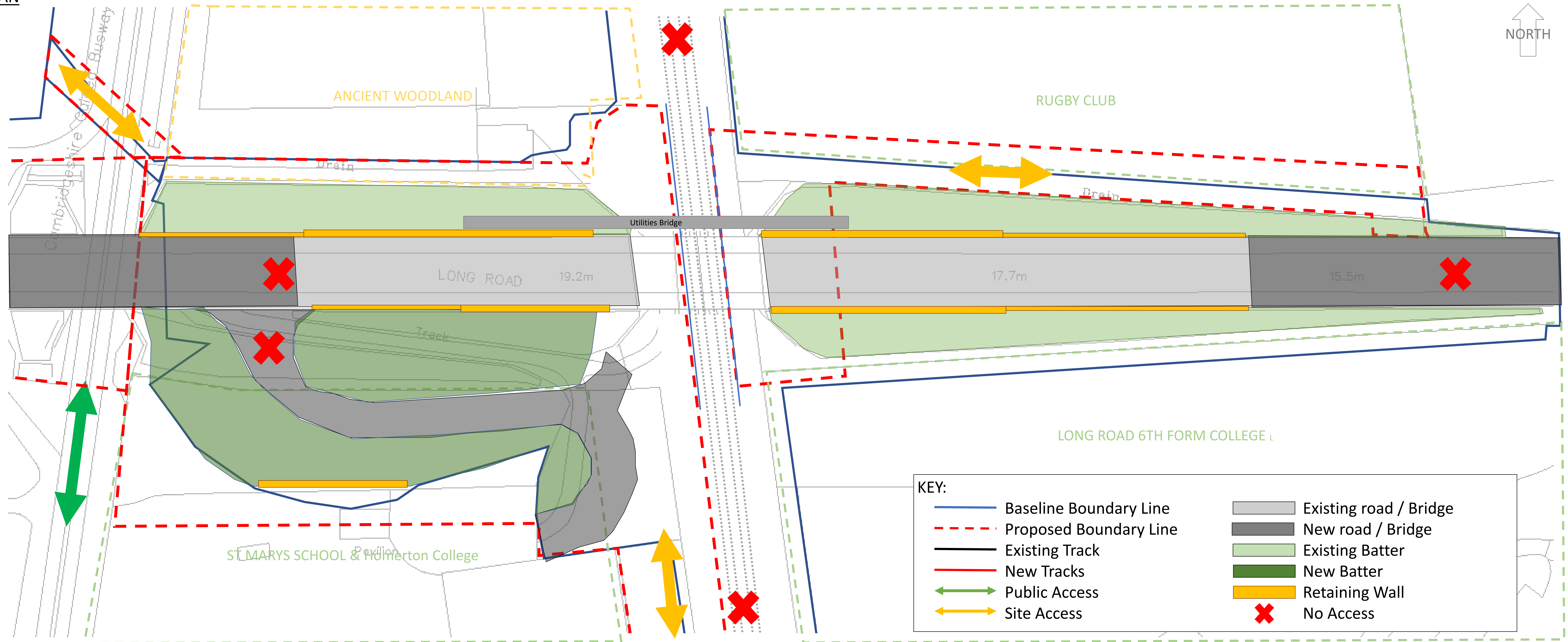
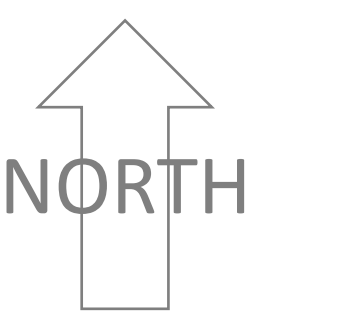
SECTION



Title: Long Road Bridge Sequence
 Project: East West Rail Cambridge Constructability
 Document No: EWR_CS3-COS-CL-XX-ST-Y-000002
 Rev: D00 Suitability: Review Page: 3

YEAR	2025												2026												2027												2028													
MONTH	1	2	3	4	5	6	7	8	9	10	11	12	1	2	3	4	5	6	7	8	9	10	11	12	1	2	3	4	5	6	7	8	9	10	11	12	1	2	3	4	5	6	7	8	9	10	11	12		
Utilities Bridge & Diversion																																																		
Enabling Works																																																		
Road Works																																																		
Bridge Works																																																		



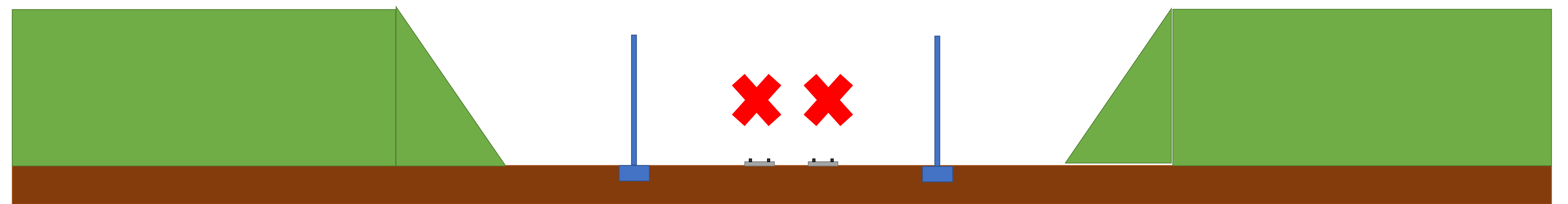


NOTES

EASTER POSSESSION

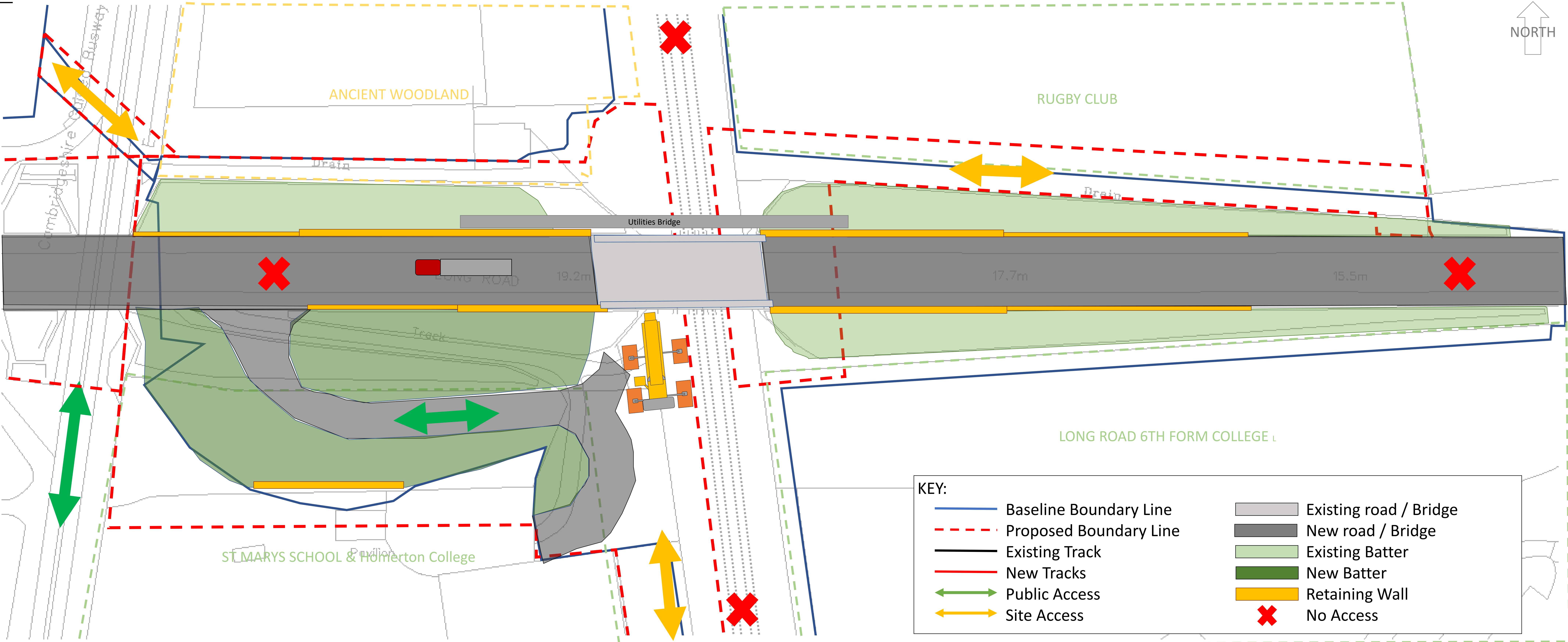
- Long Road closed for 13 weeks. (26/03/27 – 26/07/27)
- Bridge demolished during in track 4 day Easter possession.
 - OLE contact and RC wires lowered to track level
 - Tracks and OLE wires protected with working platform
 - Bridge demolished down to track level using excavators and cranes.
- Hoardings installed to allow work next to the live railway after possession.
- New school access road completed during Easter holidays.

SECTION



YEAR	2025												2026												2027												2028													
MONTH	1	2	3	4	5	6	7	8	9	10	11	12	1	2	3	4	5	6	7	8	9	10	11	12	1	2	3	4	5	6	7	8	9	10	11	12	1	2	3	4	5	6	7	8	9	10	11	12		
Utilities Bridge & Diversion																																																		
Enabling Works																																																		
Road Works																																																		
Bridge Works																																																		





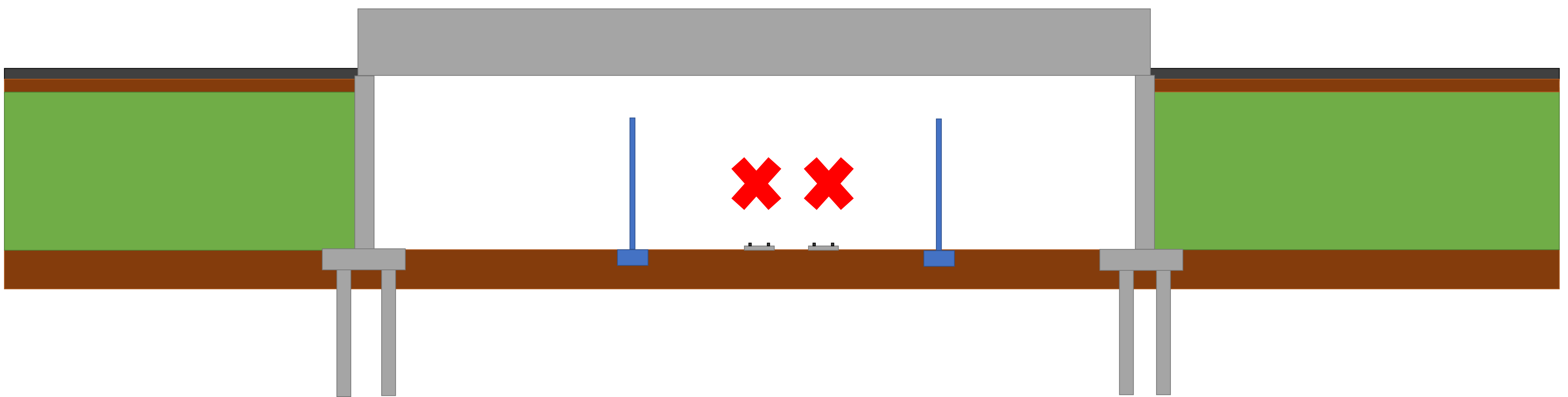
KEY:

- Baseline Boundary Line
- Proposed Boundary Line
- Existing Track
- New Tracks
- ↔ Public Access
- ↕ Site Access
- Existing road / Bridge
- New road / Bridge
- Existing Batter
- New Batter
- Retaining Wall
- ✘ No Access

NOTES

- MAY BANK HOLIDAY POSSESSION**
1. Blockade on tracks implemented for May Bank Holiday.
 2. Bridge installed piece small.
 - Girders lifted in first followed by secondary beams and deck units. Assumed bridge sections will be within lifting capacities of a 200t to 500t mobile crane.
 - Mobile crane setup at track level. Assumed crane setup can be achieved that does not require OLE wires to be dropped just isolated (assumes new bridge does not support OLE wires in permanent condition).
 - Bridge sections delivered at Long Road level.
 3. Long Road built up to finished level either side of LRB.

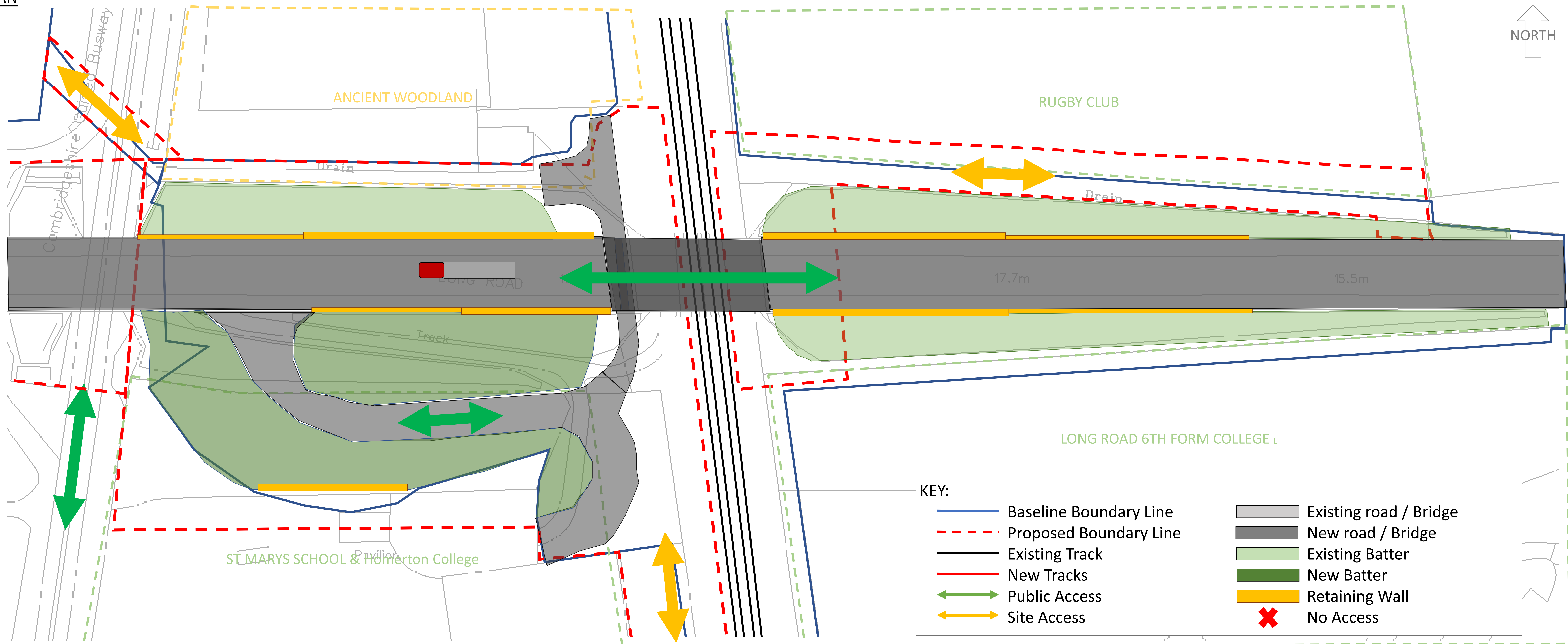
SECTION



Title: Long Road Bridge Sequence
 Project: East West Rail Cambridge Constructability
 Document No: EWR_CS3-COS-CL-XX-ST-Y-000002
 Rev: D00 Suitability: Review Page: 9

YEAR	2025												2026												2027												2028												
MONTH	1	2	3	4	5	6	7	8	9	10	11	12	1	2	3	4	5	6	7	8	9	10	11	12	1	2	3	4	5	6	7	8	9	10	11	12	1	2	3	4	5	6	7	8	9	10	11	12	
Utilities Bridge & Diversion																																																	
Enabling Works																																																	
Road Works																																																	
Bridge Works																																																	

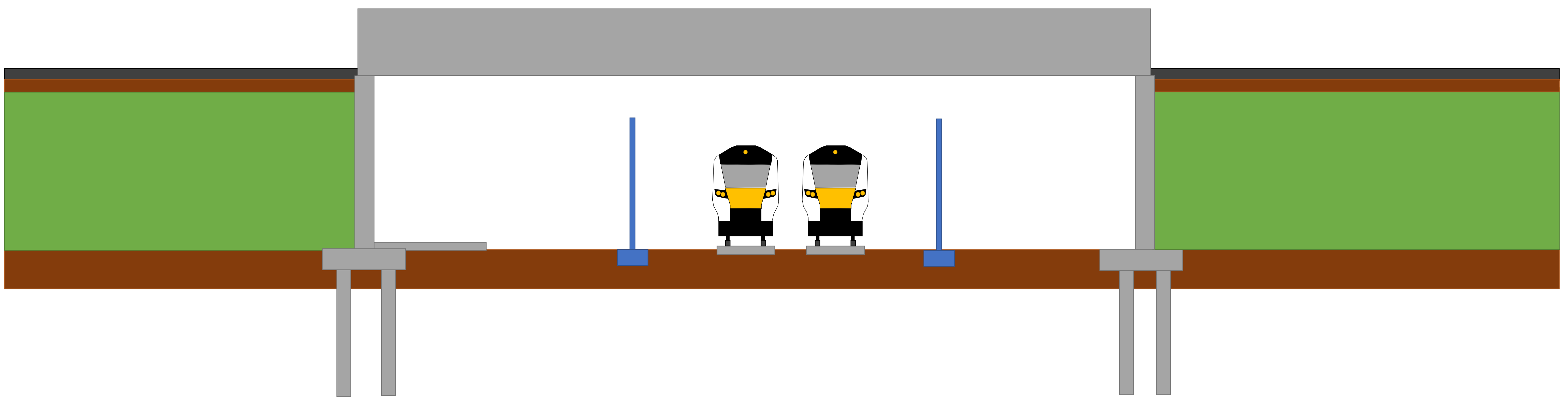




NOTES

1. Blockade on tracks lifted.
2. Bridge deck slab installed.
3. Utilities rerouted across bridge
4. Temporary utility bridge removed during all line possession of WAML.
5. NR service road completed
6. Long Road re-opened

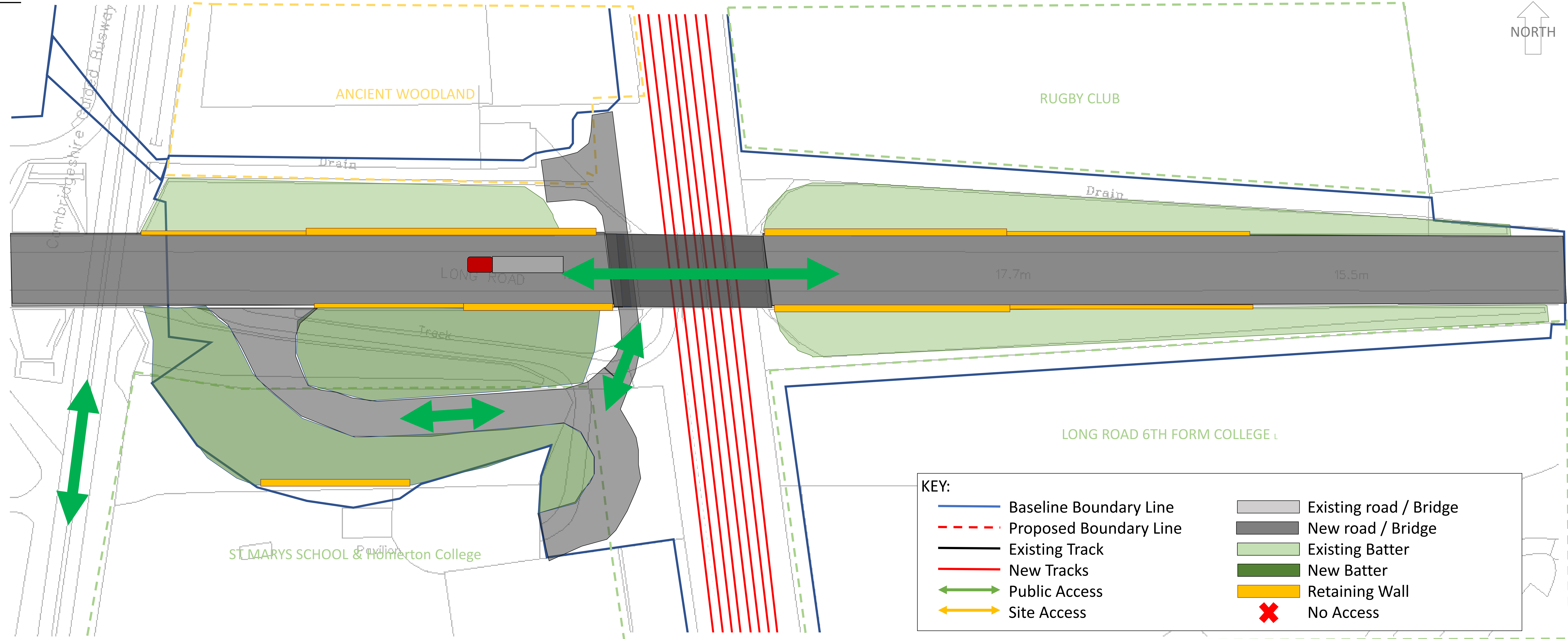
SECTION



YEAR	2025												2026												2027												2028											
MONTH	1	2	3	4	5	6	7	8	9	10	11	12	1	2	3	4	5	6	7	8	9	10	11	12	1	2	3	4	5	6	7	8	9	10	11	12	1	2	3	4	5	6	7	8	9	10	11	12
Utilities Bridge & Diversion																																																
Enabling Works																																																
Road Works																																																
Bridge Works																																																



PLAN



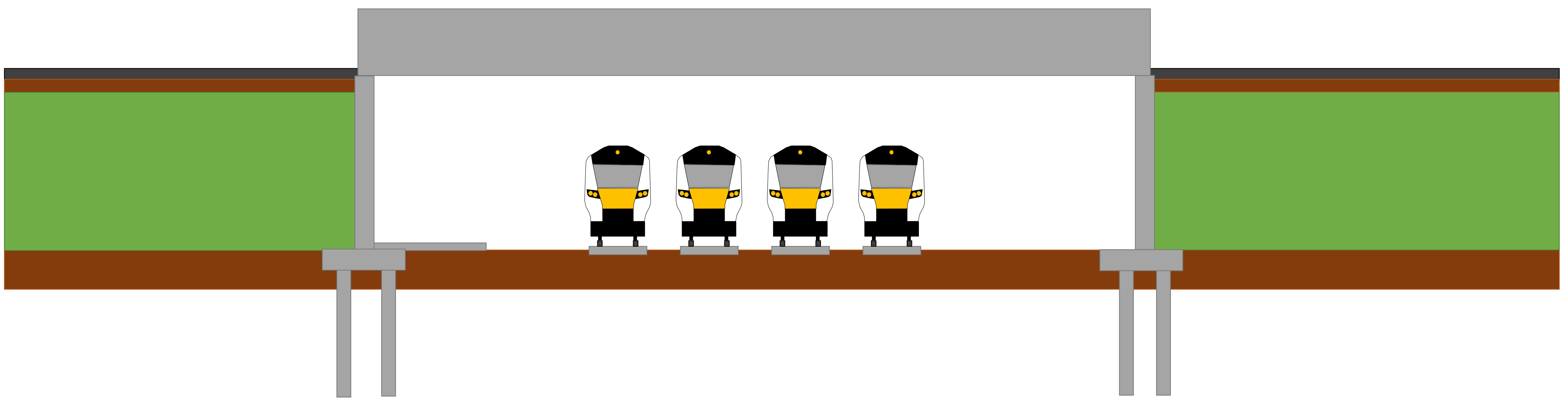
KEY:

- Baseline Boundary Line
- - - Proposed Boundary Line
- Existing Track
- New Tracks
- ↔ Public Access
- ↔ Site Access
- Existing road / Bridge
- New road / Bridge
- Existing Batter
- New Batter
- Retaining Wall
- ✘ No Access

NOTES

1. Work areas demobilised and reinstated.
2. Additional 2no. tracks installed as per Approach to Cambridge overall programme.

SECTION



Title: Long Road Bridge Sequence
 Project: East West Rail Cambridge Constructability
 Document No: EWR_CS3-COS-CL-XX-ST-Y-000002
 Rev: D00 Suitability: Review Page: 11

YEAR	2025												2026												2027												2028												
MONTH	1	2	3	4	5	6	7	8	9	10	11	12	1	2	3	4	5	6	7	8	9	10	11	12	1	2	3	4	5	6	7	8	9	10	11	12	1	2	3	4	5	6	7	8	9	10	11	12	
Utilities Bridge & Diversion																																																	
Enabling Works																																																	
Road Works																																																	
Bridge Works																																																	



Assumptions

6. Track access will be available as required for key activities. Key activities would be planned to maximise the use of public holidays such as Christmas, Easter and Bank Holidays where possible. All line possessions of WAML will be required when:

- a. Installing & removing utilities bridge
- b. Demolishing the existing bridge
- c. Installing the new. Bus and pedestrian bridges